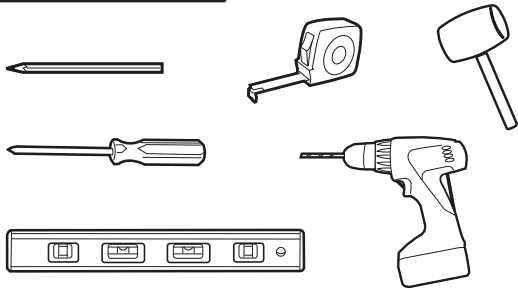
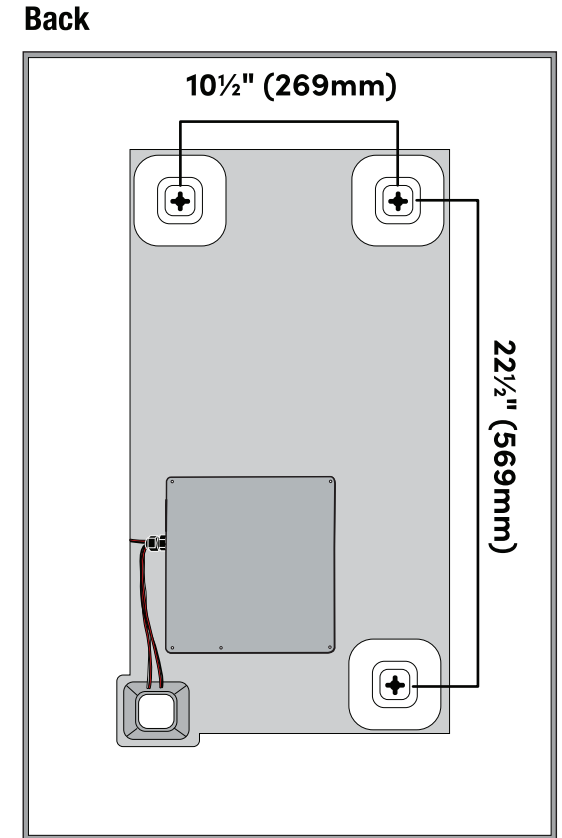
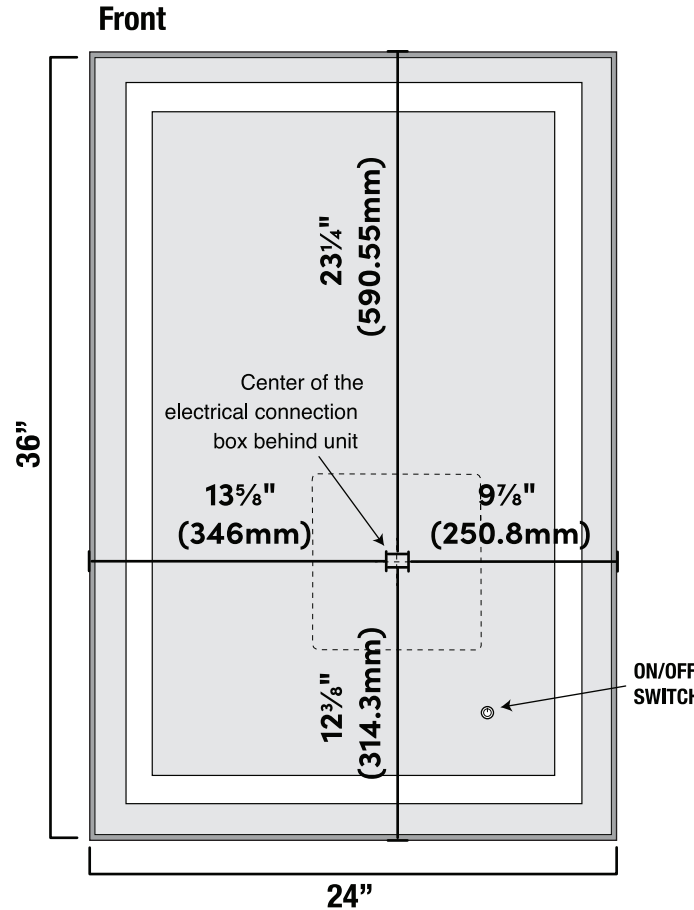
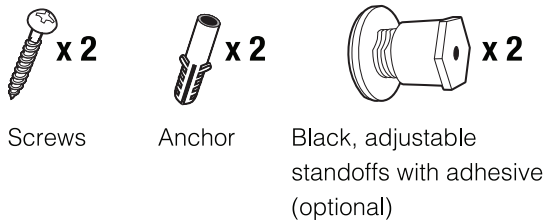


Tools Required



Supplied Hardware



Product improvements are continual.
Measurements may vary.
Please verify all dimensions prior to installation.

Mounting Instructions

Step 1

2x4 Stud
(if possible)

10½" (269mm)
(vertical mount)

22½" (569mm)
(horizontal mount)

Step 2

2x4 Stud
(if possible)

Step 3

2x4 Stud
(if possible)

If stud is not present, use drywall anchor.

Step 4

Mounting Screws

Electrical Gang Box

Electrical Connection Box

The electrical gang box should be installed according to the location of the unit's electrical connection box located on the back.

Step 5

Remove Cover

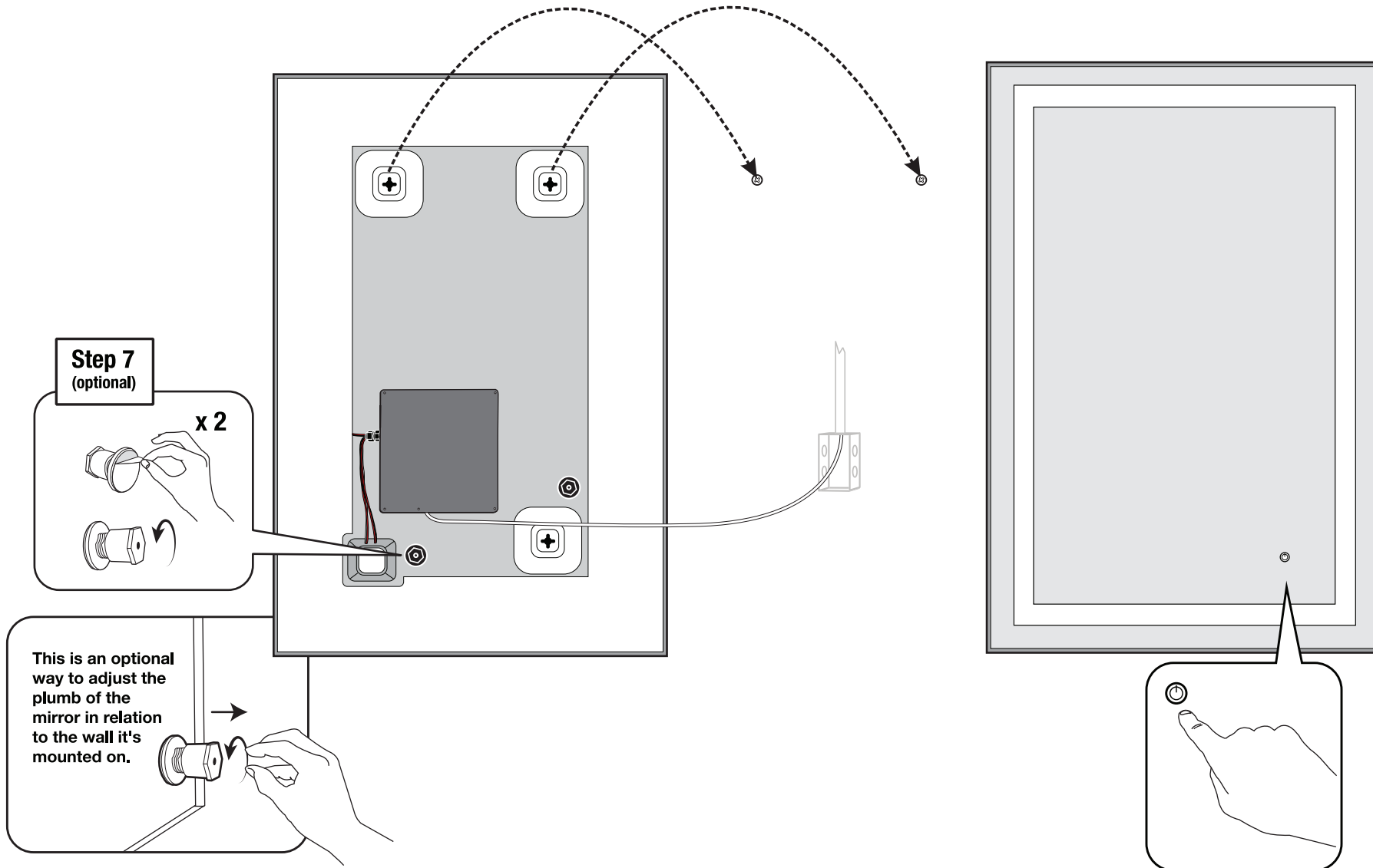
Step 6

Connect Wire

Clamp Wire

Electrical Box with installer-supplied, approved wire (at least 2 feet long*).
*Recommended

Vertical Mounting Instructions



----- **Horizontal Mounting Instructions** -----

